

MODULAR SYNTHESIS PLUG-IN SYSTEM

NE PAS OUVRI
ON ELECTRIC
OR MOISTURE.
外-電氣/湿度



Plug into the Power!



MOTIF6



S30



CS6x



MOTIF7



S80



CS6R



MOTIF8



S90



SW1000XG/P

What is the Modular Synthesis Plug-in System?

MODULAR SYNTHESIS PLUG-IN SYSTEM

Powerful Expansion Boards That:

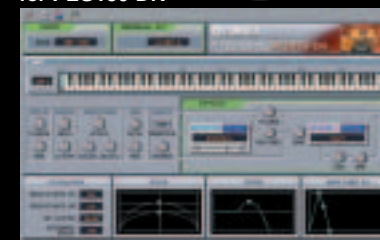
- Expand your sound generation capabilities
- Increase your available polyphony
- Give you more multitimbral parts and effects
- Can be controlled from the host keyboard
- Come bundled with PC software for detailed voice editing

Drums Plug-in Board PLG150-DR



If you're particular about drum sounds, then this is the plug-in board for you! From stereo-sampled rock kits to ultra punchy industrial and R&B kits, the PLG150-DR is packed with 80 of the most realistic drum kits on the planet, all of which have been sampled with natural sustain and live room ambience to achieve an unprecedented level of expressiveness. Many of the kits feature velocity-switched drums that change timbre dynamically according to how hard you strike the keys, as well as extremely long-sustaining, multi-position cymbal samples. The card even includes several kits from Yamaha's flagship MOTIF synthesizer. And not only does it give you great sounds, it also provides 32 notes of additional polyphony and comes with voice editing software for you to create your own custom drum kits.

Plug-in Board Editor for PLG150-DR



Tone Generator Type	AWM2
Polyphony	32 notes
Voices	80 Preset 8 User
Effects	Reverb, Insertion
Interface	Plug-in Connector (15-pin digital I/F connector)
Accessory	CD-ROM (Plug-in Board Editor for PLG150-DR, Plug-in Editor files for MOTIF Editor, Demonstration phrases / Song, Plug-in Voice Data)
Dimensions (W) x (D) x (H)	138.5 x 89.0 x 8.5 mm (5 9/16" x 3 5/8" x 3/8")
Weight	62 g (2.2 oz)

Note: Windows voice editor includes stand-alone editor and plug-in editor for Open Plug-in Technology compatible host applications (Windows XP/Me/98/2000).

Open Plug-in Technology is a newly developed software format that allows control over MIDI devices from software sequencers and other music software.

Percussion Plug-in Board PLG150-PC



The popularity of Latin music is growing, and spreading its influence to all genres of music. To satisfy the demand for highly expressive, authentic Latin percussion voices, Yamaha carefully selected the very best sounds from Q UP Arts' award-winning LATIN GROOVE FACTORY sample library and put them into a single dedicated plug-in board. The PLG150-PC gives you a total of 80 percussion kits, including Salsa, Samba, Afro-Cuban and Brazilian kits, all sampled with pristine fidelity. Reverb and Insertion effects are also provided, as well as voice editing software that allows you to tweak individual voices and create your own percussion kits right on your PC. And because it adds 32 notes of polyphony to the synthesizer in which it's installed, you can create complex rhythms without taking valuable polyphony away from other instruments.

LATIN GROOVE FACTORY is a trademark of Q UP Arts.

Plug-in Board Editor for PLG150-PC



Tone Generator Type	AWM2
Polyphony	32 notes
Voices	80 Preset 8 User
Effects	Reverb, Insertion
Interface	Plug-in Connector (15-pin digital I/F connector)
Accessory	CD-ROM (Plug-in Board Editor for PLG150-PC, Plug-in Editor files for MOTIF Editor, Demonstration phrases / Song, Plug-in Voice Data)
Dimensions (W) x (D) x (H)	138.5 x 89.0 x 8.5 mm (5 9/16" x 3 5/8" x 3/8")
Weight	62 g (2.2 oz)

Note: Windows voice editor includes stand-alone editor and plug-in editor for Open Plug-in Technology compatible host applications (Windows XP/Me/98/2000).

Open Plug-in Technology is a newly developed software format that allows control over MIDI devices from software sequencers and other music software.

Analog Physical Modeling Plug-in Board

PLG150-AN



Reproduce the fat, resonant sounds of vintage analog synthesizers. Featuring a synth engine similar to that of Yamaha's AN1x analog physical modeling synthesizer, this plug-in board gives you a full array of classic synthesizer components, including warm resonant filters, LFOs, oscillator sync and frequency modulation. It's even equipped with an arpeggiator, step sequencer, distortion and 3-band EQ. A "morphing" function lets you transform between two different voices in realtime, and a programmable envelope generator allows you to draw your own custom envelopes for various parameters. With the PLG150-AN, creating the classic analog strings, brass and bass sounds of the '70s and '80s is incredibly easy.

AN Easy Editor



AN Expert Editor



Tone Generator Type	AN (Analog Physical Modeling Synthesis)
Polyphony	5 notes
Voices	256 Preset 128 User
Effects	Guitar Amp. Simulator (Distortion), 3-Band EQ, XG Part EQ
Interface	Plug-in Connector (15-pin digital I/F connector)
Accessory	FD (AN Easy Editor, AN Expert Editor, Demonstration Songs, Plug-in Voice Data for the CS6x/CS6R/S80/S30, Performance Data for XG compatible platforms)
Dimensions (W) x (D) x (H)	138.5 x 89.0 x 8.5 mm (5 9/16" x 3 5/8" x 3/8")
Weight	65 g (2.3 oz)

Note: In addition to a plug-in editor for XGworks, AN Easy Editor exclusively for XG-compatible platforms such as the SW1000XG/P is included. PLG150-AN can import bulk MIDI data from the AN1x; however, some parameters may not be reproduced. The preset voice data for the PLG150-AN plug-in board is stored inside the ROM of the MOTIF series and S90 synthesizers.

AN Expert Editor stand-alone version (Windows® and Macintosh®) can be downloaded from <<http://www.yamahasynt.com>>.

Piano Plug-in Board

PLG150-PF



For the serious piano player, this plug-in board is loaded with hundreds of painstakingly sampled piano and keyboard voices—from concert grands and uprights to harpsichords. It also contains a wide variety of authentic electric piano sounds, including classic keyboards of the '60s and '70s and contemporary digital pianos. What's more, it's equipped with a dedicated digital effects processor, allowing you to apply EQ, reverb, chorus and insertion effects to the voices without taking away from the processing power of the host synthesizer. Multiple PLG150-PF boards can be used together, giving you an additional 64 notes of polyphony for every board installed. For those who demand authentic piano sound but don't want to bother with a real piano, a Yamaha keyboard equipped with multiple piano plug-in boards is a perfect solution.

PF Easy Editor



Tone Generator Type	AWM2
Polyphony	64 notes
Voices	136 Preset
Effects	Reverb, Chorus, Insertion, 2-Band EQ
Interface	Plug-in Connector (15-pin digital I/F connector)
Accessory	FD (PF Easy Editor, Demonstration Songs, Plug-in Voice Data for the CS6x/CS6R/S80/S30)
Dimensions (W) x (D) x (H)	138.5 x 89.0 x 8.5 mm (5 9/16" x 3 5/8" x 3/8")
Weight	72 g (2.5 oz)

Note: In addition to a plug-in editor for XGworks, PF Easy Editor exclusively for XG-compatible platforms such as the SW1000XG/P is included. The preset voice data for the PLG150-PF plug-in board is stored inside the ROM of the MOTIF series and S90 synthesizers.

Advanced DX/TX Plug-in Board

PLG150-DX



Get the classic sounds of Yamaha's renowned DX7 synthesizer. The PLG150-DX features the same 6-operator, 16-note polyphonic FM tone generation system that took the synthesizer industry by storm in the '80s. With this plug-in board, you can produce beautifully expressive electric pianos, punchy basses, ultra dynamic synth leads and unusual sound effects—sounds for which FM synthesis is famous. The PLG150-DX is compatible with voice data of the Yamaha DX and TX series synthesizers, including the DX7, DX7II, TX816 and TX802, which means you'll have access to literally thousands of DX patches available on the Internet and elsewhere. This plug-in board is a must-have for composers of R&B and electronic music.

DX Easy Editor



DX Simulator



Tone Generator Type	FM Synthesis
Polyphony	16 notes
Voices	912 Preset 64 User
Effects	Part EQ, Lowpass, Highpass
Interface	Plug-in Connector (15-pin digital I/F connector)
Accessories	CD-ROM (DX Easy Editor, DX Simulator), FD (Demonstration Songs, Plug-in Voice Data for the CS6x/CS6R/S80/S30, Performance Data for XG compatible platforms)
Dimensions (W) x (D) x (H)	138.5 x 89.0 x 8.5 mm (5 9/16" x 3 5/8" x 3/8")
Weight	63 g (2.2 oz)

Note: In addition to a plug-in editor for XGworks, DX Easy Editor exclusively for XG-compatible platforms such as the SW1000XG/P is included.

The preset voice data for the PLG150-DX plug-in board is stored inside the ROM of the MOTIF series and S90 synthesizers.

DX Simulator stand-alone version (Windows® and Macintosh®) can be downloaded from <<http://www.yamahasynt.com>>.

Virtual Acoustic Plug-in Board

PLG150-VL



As its name suggests, the Virtual Acoustic plug-in board lets you create incredibly expressive and natural-sounding voices by digitally simulating the physical characteristics of acoustic instruments. Along with its superior ability to emulate wind, brass and string instruments, this plug-in board lets you create imaginary "virtual" musical instruments. Thanks to its unique synthesis architecture, extensive realtime performance control of the voices is possible, making it the ideal plug-in board for keyboard soloists. The PLG150-VL is fully compatible with VL-XG song data, which allows for truly expressive and realistic playback of sequenced wind and string instrument parts.

VL Visual Editor



Tone Generator Type	S/VA (Self-oscillating Virtual Acoustic Synthesis)
Polyphony	1 note monophonic
Voices	256 Preset 70 User
Interface	Plug-in Connector (15-pin digital I/F connector)
Accessories	CD-ROM (VL Visual Editor), FD (Demonstration Songs, Plug-in Voice Data for the CS6x/CS6R/S80/S30, Performance Data for XG compatible platforms)
Dimensions (W) x (D) x (H)	138.5 x 89.0 x 8.5 mm (5 9/16" x 3 5/8" x 3/8")
Weight	56 g (2.0 oz)

Note: VL Visual Editor for Windows® is a plug-in for XGworks sequencing software. VL Visual Editor for Macintosh® is a stand-alone application.

The preset voice data for PLG150-VL plug-in board is stored inside the ROM of the MOTIF series and S90 synthesizers.

VL Visual Editor stand-alone version (Windows® and Macintosh®) can be downloaded from <<http://www.yamahasynt.com>>.

XG Plug-in Board PLG100-XG



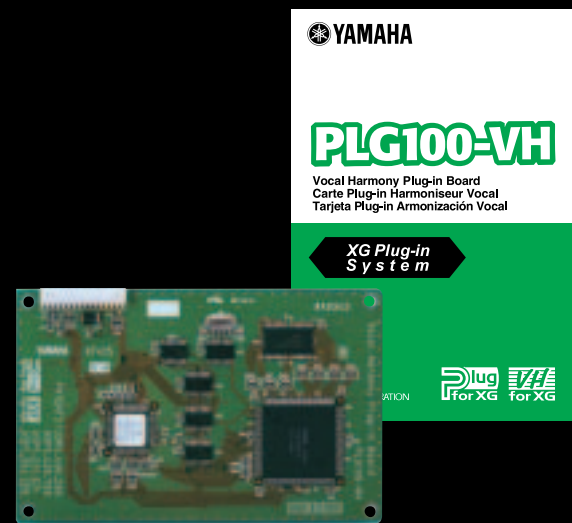
Add XG and General MIDI compatibility to your existing synthesizer! This plug-in board gives you over 400 high-quality sampled voices, from bread-and-butter instruments to sound effects. It also includes 12 stunning drum kits and a full array of high-quality digital effects such as reverb, chorus and insertion effects. The PLG100-XG provides 32 additional notes of polyphony and 16 extra multitimbral parts, allowing for the creation of fully orchestrated sequences. And because it fully supports the XG MIDI standard, XG and General MIDI files will sound their absolute best when played back with this plug-in board.

XGworks lite V3.0



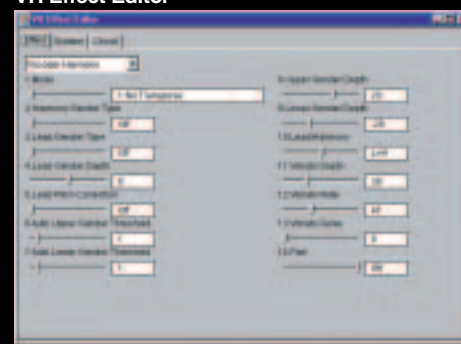
Tone Generator Type	AWM2
Polyphony	32 notes
Voices	480 Preset + 12 Drum Kits
Effects	Reverb, Chorus, Variation
Connector	Plug-in Connector (15-pin digital I/F connector)
Accessories	CD-ROM (XGworks lite V3.0, XG Editor for Mac), FD (Demonstration Songs)
Dimensions (W) x (D) x (H)	138.5 x 89.0 x 8.5 mm (5 9/16" x 3 5/8" x 3/8")
Weight	56 g (2.0 oz)

Vocal Harmony Plug-in Board PLG100-VH



Designed to work in conjunction with the A/D input equipped on specific Yamaha synthesizers, the PLG100-VH can add powerful harmony and vocoder effects to your voice. Simply plug a microphone into the keyboard and sing away—any chords you play will translate into a beautiful vocal harmony backup (up to four parts, including your original voice). The PLG100-VH includes a vibrato effect that automatically adds a warm, natural vibrato to your voice, and a "gender change" function that can turn a low male voice into female voice (and vice versa). Harmony intervals and vocoder melodies can be recorded in a sequencer track for automated playback—ideal for live performers and home recording artists alike.

VH Effect Editor



Maximum Harmony	3 voices
Effects	Vocoder Harmony, Detune Harmony, Chordal Harmony, Chromatic Harmony
Voice Control	Gender change (male → female, female → male), Vibrato, Volume, Pan, Detune
Interface	Plug-in Connector (15-pin digital I/F connector)
Dimensions (W) x (D) x (H)	138.5 x 89.0 x 8.5 mm (5 9/16" x 3 5/8" x 3/8")
Weight	53 g (1.9 oz)

Note: VH Effect Editor stand-alone version (Windows® and Macintosh®) can be downloaded from <<http://www.yamahasynth.com>>.

Platforms for the Modular Synthesis Plug-in System

MUSIC PRODUCTION SYNTHESIZER

MOTIF8
MOTIF7
MOTIF6

3 EXPANSION SLOTS



- Great sounds based on a huge wave ROM (84MB in 16-bit linear format)
- Revolutionary Integrated Sampling Sequencer
- Realtime control surface for external sequencing software like Logic, Cubase VST, Cakewalk and Pro Tools
- Three expansion slots for Modular Synthesis Plug-in System boards
- Interactive arpeggiator with velocity switch
- Balanced Hammer Effect keyboard with aftertouch (MOTIF 8)
- SmartMedia™ memory card storage

Music Synthesizer

S90

3 EXPANSION SLOTS



- Huge wave ROM (110MB in 16-bit linear format) including sounds from MOTIF and a brand-new three-velocity-layer grand piano
- 88-note Balanced Hammer Effect keyboard with aftertouch
- 640 Voices, 128 Performances, 50 Mix Templates and 128 Master Programs
- Portable, professional design with intuitive user interface
- Three expansion slots for Modular Synthesis Plug-in System boards
- SmartMedia™ slot for storing voices and playback of Standard MIDI sequences
- SQ01 sequencing software and voice editor included

Music Synthesizer

S80

2 EXPANSION SLOTS



- 88-note weighted action with MIDI master keyboard functions
- Great sounds with new stereo pianos, strings and brass
- 64-note polyphony with multi-mode resonant filters
- Two expansion slots for Modular Synthesis Plug-in System boards
- SmartMedia™ slot for storing voices and playback of Standard MIDI sequences
- XGworks lite V3.0 sequencing software included

Music Synthesizer

S30

1 EXPANSION SLOT



- 61-note synthesizer with MIDI master keyboard functions
- Great sounds based on the award-winning S80
- 64-note polyphony with multi-mode resonant filters
- One expansion slot for Modular Synthesis Plug-in System boards
- Direct playback of Standard MIDI Files from SmartMedia™

NOTE: The S30 cannot be used with the PLG100-VH plug-in board since it is not equipped with an A/D input.

Control Synthesizer

CS6x

2 EXPANSION SLOTS



- 19 knobs for the ultimate in realtime "analog" style control
- 384 voices and 10 drum kits, including a huge selection of cutting-edge dance sounds
- Phrase clip sampling for easy creation of drum loops
- Two expansion slots for Modular Synthesis Plug-in System boards
- Bundled with XGworks lite V3.0 sequencing software
- SmartMedia™ memory card storage

Tone Generator

CS6R

2 EXPANSION SLOTS

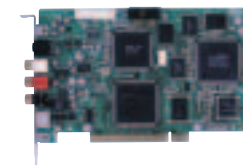


- Same amazing voices of the CS6x in a 2-space rackmount synthesizer
- Phrase clip sampling for easy creation of drum loops
- Two expansion slots for Modular Synthesis Plug-in System boards
- Bundled with XGworks lite V3.0 sequencing software
- SmartMedia™ memory card storage

PCI AUDIO MIDI CARD

SW1000XG/P

1 EXPANSION SLOT



- Top-quality XG tone generator and hard disk recording functions on a single PCI card
- One expansion slot for Modular Synthesis Plug-in System boards
- Seamless integration with Yamaha XGworks sequencing software and music production software from other manufacturers
- XGworks for SW1000 sequencing software included

NOTE: Please make sure that your SW1000XG has a letter P (SW1000XG/P) printed clearly on the box, and on the silver backplate of the card itself. It signifies that the card is PLG150-AN/PLG150-PF compatible. If not, you may update the SW1000XG by sending the free update ticket included in the PLG150-AN/PLG150-PF package to your local Yamaha subsidiary.



MODULAR SYNTHESIS PLUG-IN SYSTEM

- Specifications and appearance subject to change without notice.
- All trademarks and registered trademarks are property of their respective owners.

For details please contact:



YAMAHA

YAMAHA CORPORATION
P.O.BOX 1, Hamamatsu Japan

www.yamahasyth.com



This document is printed on
chlorine-free (ECF) paper with soy ink.

LCK0206

Printed in Japan