




# SOFTWARE for MAGICSTOMP

## Installation Guide

**ver. 2.10**

Sound Editor for MAGICSTOMP ver. 2.10 is for units using version 2.10 firmware or greater.

### SPECIAL NOTICES

- The software and this Installation Guide are exclusive copyrights of Yamaha Corporation.
- Copying of the software or reproduction of this Installation Guide in whole or in part by any means is expressly forbidden without the written consent of the manufacturer.
- Yamaha makes no representations or warranties with regard to the use of the software and documentation and cannot be held responsible for the results of the use of this guide and the software.
- Copying of the commercially available music data is strictly prohibited except for your personal use.
- The screen displays as illustrated in this Installation Guide are for instructional purposes, and may appear somewhat different from the screens which appear on your computer.
- Click on the **red-colored** text to jump to the related item in this Installation Guide.
- The OMS<sup>®</sup> and  mark in this Owner's Manual are the trademarks or registered trademarks of Opcode Systems, Inc.
- The company names and product names in this Installation Guide are the trademarks or registered trademarks of their respective companies.
- Future upgrades of application and system software and any changes in specifications and functions will be announced separately.

This Installation Guide assumes that you are already familiar with basic Windows/Macintosh operations. If you are not, please refer to the owner's manual which came with your Windows/Mac OS software before using Sound Editor.

For information on software and hardware requirements and the interconnection of devices that are required to use the Sound Editor for MAGICSTOMP, please refer to the Owner's Manual that came with your MAGICSTOMP.

The screen illustrations in this Installation Guide are mainly taken from Windows. Differences that exist in the Macintosh version are duly shown and explained.

©2004 Yamaha Corporation. All rights reserved.

# For Windows Users

## Software Installation

### Uninstall (removing the installed application)

You can remove the installed application software. Select [START] (→ [Settings]) → [Control Panel] → [Add/Remove Programs] → [Install/Uninstall], then select the application to be removed and click [Add/Remove...].

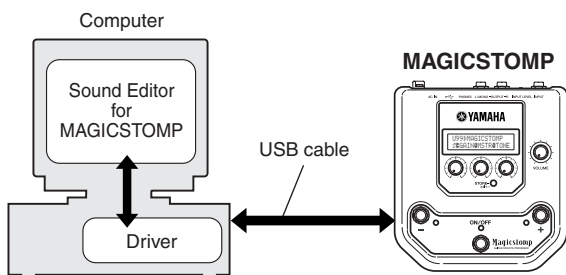
Follow the on-screen instructions to uninstall the application.

**NOTE** The button names or menus may differ depending on the computer OS.

## USB MIDI Driver

A USB-MIDI driver properly installed in the computer is necessary in order to transfer data between the MAGICSTOMP and the computer.

Before installing the application, verify the OS used by your computer then install.



### ● Installing the driver on a Windows 98/Me system

- 1 Start the computer.
- 2 Insert the included CD-ROM into the CD-ROM drive.
- 3 Disconnect the MAGICSTOMP's power adaptor then use the supplied USB cable to connect the USB jack on your computer (or USB hub), to the USB jack on the MAGICSTOMP. Next, connect the MAGICSTOMP's power adaptor (switches the MAGICSTOMP on), and the "Add New Hardware Wizard" automatically appears on the computer's display.

**NOTE** For Windows Me users, check the radio button to the left of "Automatic search for a better driver (Recommended)" and click [Next]. The system automatically starts searching and installing the driver. Proceed to Step 4. If the system does not detect the driver, select "Specify the location of the driver (Advanced)" and specify the CD-ROM drive's "USBdrv\_" folder to install the driver.

Windows 98



Windows Me



- 4 Click [Next].  
The window below enables you to select the search method.



- 5 Check the radio button to the left of “Search for the best driver for your device. (Recommended).” Click [Next]. The window below enables you to select a location in which to install the driver.



- 6 Check the “CD-ROM drive” box and uncheck all other items. Click [Next].

**NOTE** The system may ask you to insert a Windows CD-ROM while it checks for the driver. Specify the USBdrv\_ directory of the CD-ROM drive (such as D:\USBdrv\_) and continue the installation.

**NOTE** When using the Windows 98, specify the USBdrv\_ directory of the CD-ROM drive (such as D:\USBdrv\_) and continue the installation.

- 7 When the system detects the driver on the CD-ROM and is ready for installation, it displays the following screen. Make sure that the “YAMAHA USB MIDI Driver” is listed, and click [Next]. The system starts the installation.



- 8 When the installation is complete, the following screen appears. Click [Finish].

**NOTE** Some computers may take about ten seconds or more to show this screen after the installation is complete.

#### Windows 98



#### Windows Me



The driver has been installed.

## ● Installing the driver on a Windows 2000 system

- 1 Start the computer and use the “Administrator” account to log into Windows 2000.
- 2 Select [My Computer | Control Panel | System | Hardware | Driver Signing | File Signature Verification], and check the radio button to the left of “Ignore - Install all files, regardless of file signature” and click [OK].
- 3 Insert the included CD-ROM into the CD-ROM drive.
- 4 Disconnect the MAGICSTOMP’s power adaptor then use the supplied USB cable to connect the USB jack on your computer (or USB hub), to the USB jack on the MAGICSTOMP. Next, connect the MAGICSTOMP’s power adaptor (switches the MAGICSTOMP on), and the “Found New Hardware Wizard” automatically appears on the computer’s display. Click [Next].
- 5 Check the radio button to the left of “Search for a suitable driver for my device. (Recommended).” Click [Next].  
The window that appears enables you to select a location in which to install the driver.
- 6 Check the “CD-ROM drives” box and uncheck all other items. Click [Next].

**NOTE** The system may ask you to insert a Windows CD-ROM while it checks for the driver. Specify the “USBdrv2k\_” directory of the CD-ROM drive (such as D:\USBdrv2k\_) and continue the installation.

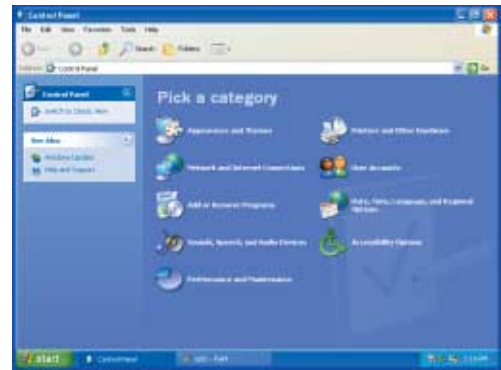
- 7 When the installation is complete, the system displays “Completing the Found New Hardware Wizard.” Click [Finish].

**NOTE** Some computers may take about ten seconds or more to show this screen after the installation is complete.

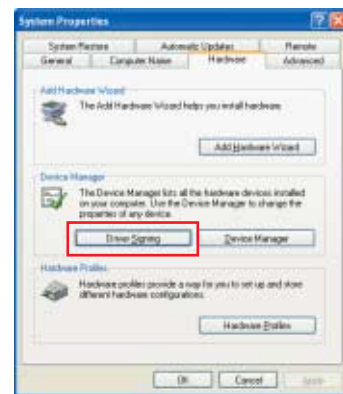
- 8 Restart the computer. The driver has been installed.

## ● Installing the driver on a Windows XP system

- 1 Start the computer.
- 2 Select [Start] → [Control Panel]. If the control panel appears as shown below, click “Switch to Classic View” in the upper left of the window. All control panels and icons will be displayed.



- 3 Select [Start] → [Hardware] → [Driver Signing].



- 4 The “Driver Signing” dialog box appears. Select the radio button located to the left of “Ignore - Install the software anyway and don’t ask for my approval”.



Click the [OK] button to close System Properties, and then click “X” in the upper right of the window to close the Control Panel.

- 5 Insert the included CD-ROM into the CD-ROM drive.
- 6 Disconnect the MAGICSTOMP’s power adaptor then use the supplied USB cable to connect the USB jack on your computer (or USB hub), to the USB jack on the MAGICSTOMP. Next, connect the MAGICSTOMP’s power adaptor (switches the MAGICSTOMP on), and the “Found New Hardware Wizard” automatically appears on the computer’s display.
- 7 Check the radio button to the left of “Search for a suitable driver for my device. (Recommended).” Click [Next]. The system starts the installation.
- 8 When the installation is complete, the system displays “Completing the Found New Hardware Wizard.” Click [Finish].

**NOTE** Some computers may take about ten seconds or more to show this screen after the installation is complete.

- 9 Restart the computer. The driver has been installed.

## ● Installing the Sound Editor for MAGICSTOMP

- 1 Insert the included CD-ROM into the CD-ROM drive. The name of the CD-ROM (X5906A0) appears in “My Computer”.
- 2 Click on the CD-ROM icon to open, then double-click on the “Tools” folder.  
“Setup.exe” and some other files appear.



- 2 Double click on the “Setup.exe” file.  
The “Sound Editor for MAGICSTOMP” setup dialog appears.



- 3 Follow the instructions on the display to install the application.
- 4 After installation is complete, restart the computer.

After restarting the computer you’ll find the “YAMAHA” folder has been added (default: Program Files) and the “SGP Tools” folder has been created in it.



Installation of the Sound Editor for MAGICSTOMP is complete.

## Sound Editor Startup and Settings

After the drivers and Sound Editor for MAGICSTOMP are installed, follow the steps below to start the Sound Editor for MAGICSTOMP application and set the necessary settings.

- 1 From the “Start” menu, select “Program”→“YAMAHA SGP Tools”→“Sound Editor for MAGICSTOMP”→“Sound Editor for MAGICSTOMP”.
- 2 The Sound Editor for MAGICSTOMP starts.  
After the MAGICSTOMP Setup tool bar shown below appears, click on the MAGICSTOMP Setup button.



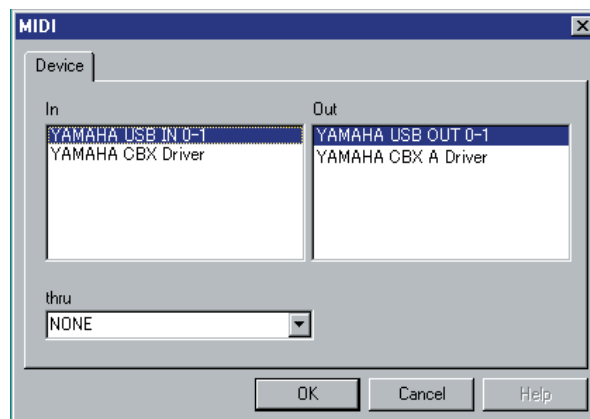
MAGICSTOMP Setup button

- 3 Clicking the MAGICSTOMP Setup buttons opens the Setup dialog box. Set the relevant MIDI ports (IN/OUT/THRU) to use the connected MAGICSTOMP.  
The following are normal settings.

In ..... Set to “YAMAHA ISB IN 0-1”

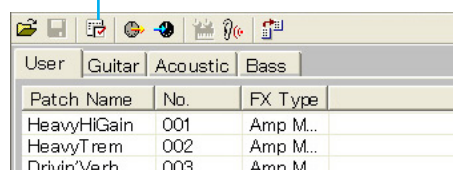
Out ..... Select “YAMAHA ISB OUT 0-1”

thru ..... Select “NONE”



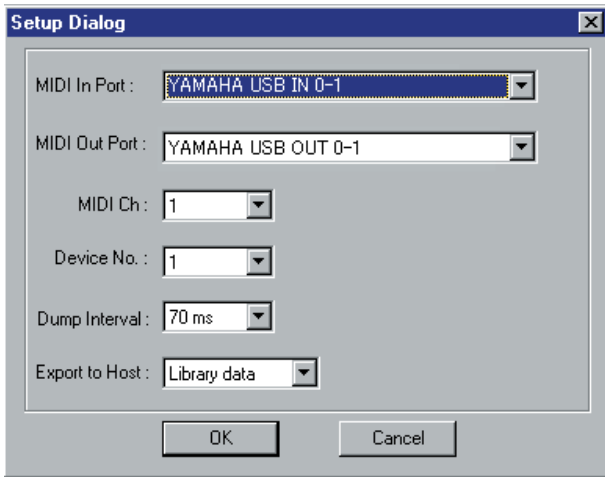
- 4 Click the Editor Setup Button in the library window’s tool bar to open the Editor Setup dialog box.

Editor Setup Button



- 5 Set the appropriate in/output ports or device number to allow communication between the Sound Editor and MAGICSTOMP.

**NOTE** Refer to the “Sound Editor for MAGICSTOMP Manual” PDF manual in the accompanying CD-ROM’s “Manual” folder for more information on the Editor Setup Dialog box.



Now that setup is complete, you can use the Sound Editor for MAGICSTOMP.  
These settings are saved when you quit the Sound Editor for MAGICSTOMP so the next time you start the application setup is not required.

# For Macintosh Users

## Software Installation

### Open Music System (OMS) 2.3.8

OMS allows you to use several MIDI applications on the Mac OS at the same time. If you already have OMS installed on your computer, reinstallation is unnecessary.

- 1 Start the computer.
- 2 Insert the included CD-ROM into the CD-ROM drive. The system displays the CD-ROM icon on the desktop.
- 3 From the CD-ROM → “International” folder → double-click the “OMS” folder. “Install OMS 2.3.8” will be displayed.
- 4 Double-click on “Install OMS 2.3.8.” OMS Setup Dialog will be displayed.

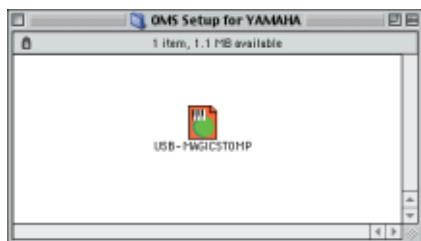


- 5 Execute the installation by following the on-screen directions. After the installation, select “Restart.”

**NOTE** After the installation is complete, you may possibly encounter an error message warning that the installer did not close. In this case, go to the “File” menu and select “Quit” to close the installer. Then reboot the computer.

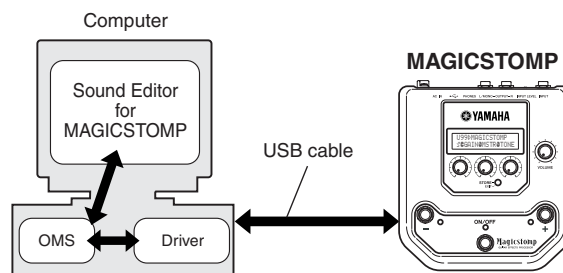
After restarting the Macintosh, you will find the “Opcode”/“OMS Applications” folder on your computer (Hard Disk, as the default).

- 6 From the CD-ROM → “International” folder → “OMS” folder → copy the “OMS Setup for Yamaha” folder to the “OMS Applications” folder (drag-and-drop it to the folder). In the “OMS Setup for Yamaha” folder you will find the OMS setup file for the MAGICSTOMP labeled “USB-MAGICSTOMP”. Use this setup file to setup OMS. (page9)



### USB MIDI Driver

To operate the MAGICSTOMP from your computer via USB, you’ll need to install the appropriate driver software. The USB-MIDI driver is software that transfers MIDI data back and forth between sequence software and the MAGICSTOMP via a USB cable.



Also, after installing the USB-MIDI driver, you will need to set up the OMS (page9).

- 1 Start the computer.
- 2 Insert the included CD-ROM into the CD-ROM drive. The system displays the CD-ROM icon on the desktop.
- 3 From the CD-ROM → “International” folder → “USBdrv\_” folder → double-click the “Install USB MIDI Driver” icon.
- 4 The “Install Location” box displays the destination of the installation. If you wish to change the destination disk or folder, use the [Switch Disk] button and the pop-up menu to specify the desired destination.

**NOTE** As this box usually displays the start-up disk as the destination, nothing needs to be changed.

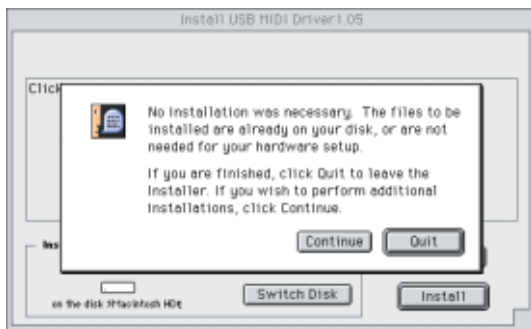


- Click the [Install] button. The system displays the following message: “This installation requires your computer to restart after installing this software. Click Continue to automatically quit all other running applications.” Click [Continue].

**NOTE** To cancel the installation, click [Cancel].



- The installation starts. If the driver has already been installed, the following message appears. To return to step 5, press [Continue]. To complete the installation, click [Quit].



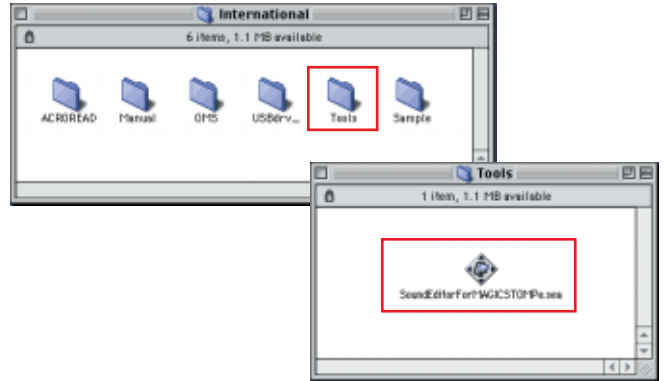
- When the installation is complete, the system displays the following message: “Installation was successful. You have installed software which requires you to restart your computer.” Click [Restart]. The computer automatically restarts.



- After you restart your computer, make sure that the following files are installed in the locations described below.
  - System Folder | Control Panels | YAMAHA USB MIDI Patch
  - System Folder | Extensions | USB YAMAHA MIDI Driver
  - System Folder | OMS Folder | YAMAHA USB MIDI OMS Driver

## Installing the Sound Editor for MAGICSTOMP

- Start the computer.
- Insert the included CD-ROM into the CD-ROM drive. The system displays the CD-ROM icon on the desktop.
- From the CD-ROM → “International” folder → “Tools” folder → double-click on the “SoundEditorForMAGICSTOMP.sea” folder.



The file expands and the “Install Location” box displays the destination of the installation.

- Select the destination for installation and click the “Install” button.

Installation of the Sound Editor for MAGICSTOMP is now complete.



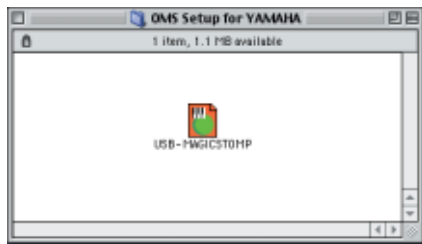
# Setup the Sound Editor

After installation of the drivers and Sound Editor for MAGICSTOMP is complete, follow the steps below to start the Sound Editor and make the appropriate settings.

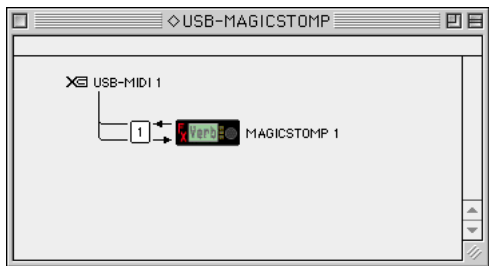
## Setting up OMS

- 1 Use a USB cable to connect the USB terminal of the computer (or the USB hub) to the USB terminal of the MAGICSTOMP and turn the MAGICSTOMP's power on (connect the power adaptor).
- 2 Start the computer.
- 3 Open the "Opcode" → "OMS Application" folders, then in the "OMS Setup for Yamaha" folder double-click on the "USB-MAGICSTOMP" studio setup file to start the OMS Setup.

**NOTE** The "USB-MAGICSTOMP" file was copied to your computer's hard disk in the procedure on page 7. If the file has not been copied to your computer's hard disk, follow the step 7 described on [Open Music System \(OMS\) 2.3.8](#) on page 7. and copy the file to you hard disk.



- 4 After starting the OMS Setup, the Studio setup file double-clicked in step 3 opens.



**NOTE** If "◇" is not indicated at the right of the setup file name, select "Make Current" from the "File" menu and execute the save operation.

The OMS studio setup has been completed.

**NOTE** After the OMS studio setup above has been completed, your computer will recognize only the MAGICSTOMP as a MIDI instrument. If you use another MIDI instrument in addition to the MAGICSTOMP or you add a second MAGICSTOMP to the existing system, you should create an original Studio Setup file.

**NOTE** The included OMS studio setup file may not function even if you follow the above procedure, depending on your Macintosh/Mac OS version. (MIDI data cannot be transmitted/received even if the setup becomes available.)

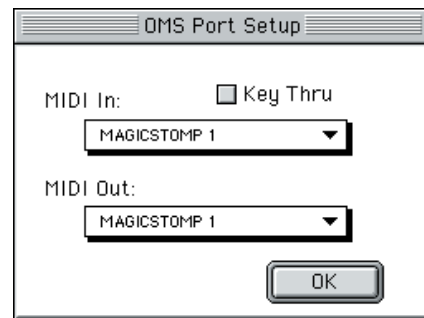
In this situation, connect your Macintosh to the MAGICSTOMP via the USB cable and follow the procedure below to re-create the setup file.

- 1 Start OMS Setup and select "New Setup" from the "File" menu.
- 2 The "OMS Driver Search" dialog appears. Remove the check from the "Modem" and "Printer" check boxes, and click [Search] to execute the device search.  
If the Search operation has been completed successfully, the [USB-MIDI] device is displayed in the OMS driver setting dialog.

- 3 Click the [OK] button to search for ports. Port 1, Port 2 ... appears in the dialog. Mark the appropriate checkbox of the port and click the [OK] button to store the setting.

## Setting up the Sound Editor for MAGICSTOMP

- 1 Open "Chooser" from the Apple Menu, then open and disable "Apple Talk".  
**NOTE** If Apple talk is active, an alert will appear when the Sound Editor starts. If so, select "Set to OFF". It will take some time for Apple Talk to be disabled.
- 2 In the "Sound Editor for MAGICSTOMP E" folder on your hard disk, double-click on the "SoundEditorForMAGICSTOMP" icon.
- 3 The Sound Editor for MAGICSTOMP application starts up.
- 4 From Sound Editor for MAGICSTOMP's "MIDI" menu, select "OMS Port Setup". The "OMS Port Setup" dialog box appears.
- 5 In the following example, the MAGICSTOMP is the MIDI device and its settings are applied to OMS.



Keyboard Thru ..... Set to OFF (no check)  
MIDI In ..... Select " MAGICSTOMP 1"  
MIDI Out..... Select " MAGICSTOMP 1"

- 6 Click "OK" to close the dialog box.

With this setup is complete and the Sound Editor for MAGICSTOMP is ready to use. These settings are saved when you quit the Sound Editor for MAGICSTOMP so the next time you start the application setup is not required.

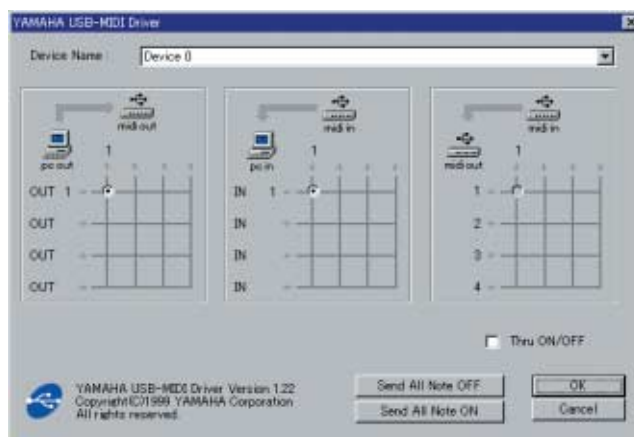
# For Windows/Macintosh Users

## About the USB Driver Setup window

From this window, you can change the MIDI port number transmitted to the MAGICSTOMP from the one set in the Sound Editor for MAGICSTOMP. (In the MAGICSTOMP's case, the default settings do not need to be changed.)

For Windows, select [START] (→ [Settings]) → [Control Panel] → [MIDI-USB Driver] to open the driver setup window.

For the Mac, select [Apple] menu → [Control Panels] → [YAMAHA USB MIDI Patch] to open the setup window.



The default settings are as follows.

Port number	MIDI OUT terminal (Thru Port number*)	MIDI IN terminal (Track Port number)
1	MIDI OUT (1)	MIDI IN (1)

# Troubleshooting

## The driver cannot be installed.

- Is the USB cable connected correctly?
  - Check the USB cable connection. (MAGICSTOMP's Owner's Manual)
  - Disconnect the USB cable, then connect it again.

### Windows

- Is the USB function enabled on your computer?
  - When you connect the MAGICSTOMP to the computer for the first time, if the "Add New Hardware Wizard" (page2, 4) does not appear, the USB function on the computer may be disabled. Perform the following steps.
    - ① Select [Control Panel] → [System] → [Device Manager] (for Windows 98/Me), or select [Control Panel] (Windows XP: Classic View) → [System] → [Hardware] → [Device Manager] (for Windows 2000/XP).
    - ② Make sure that no "!" or "x" marks appear at "Universal serial bus controller" or "USB Root Hub." If you see an "!" or "x" mark, the USB controller is disabled. For more information, refer to the owner's manual of your computer.
- Is any unknown device registered?
  - If driver installation fails, the MAGICSTOMP will be marked as an "Unknown device," and you will not be able to install the driver. Delete the "Unknown device" by following the steps below.
    - ① Select [Control Panel] → [System] → [Device Manager] (for Windows 98/Me), or select [Control Panel] (Windows XP: Classic View) → [System] → [Hardware] → [Device Manager] (for Windows 2000/XP).
    - ② Look for "Other devices" in the menu "View devices by type."
    - ③ If you find "Other devices," double-click it to extend the tree to look for "Unknown device." If one appears, select it and click the [Remove] button.
    - ④ Remove the USB cable from the MAGICSTOMP, and make the connection again.
    - ⑤ Install the driver again. (page2)

## When controlling the MAGICSTOMP from your computer via USB, the MAGICSTOMP does not operate correctly or no sound is heard.

- Did you install the driver? (Windows: page2, Macintosh: page7)
- Is the USB cable connected correctly? (MAGICSTOMP's Owner's Manual)
- Is the volume turned up on the MAGICSTOMP, playback equipment, or application?
- Is the proper port selected in the Sound Editor for MAGICSTOMP?
- Is the latest driver installed?
- Is the effect switched "OFF"? Is the MAGICSTOMP in the Tuner Mode, Store Mode, or Name Edit Mode? Make sure the MAGICSTOMP is in its normal operating mode (select a patch and switch the effect "ON").

## Cannot suspend or resume the computer correctly.

- If you are using Windows 2000, you may not be able to suspend/resume normally, depending on the particular environment (USB Host Controller, etc.). Even so, simply disconnecting and connecting the USB cable will allow you to use the MAGICSTOMP functions again.

## How can I delete or re-install the driver?

### Windows Me/98

- ① When the MAGICSTOMP is recognized correctly, double-click "System" in the Control Panel to open the System window.
- ② Double-click the "Device Manager" tab, select "YAMAHA USB MIDI Driver" and delete it.
- ③ Use the MS-DOS prompt or Explorer to delete the following three files.

**NOTE** To delete the files below using Explorer, select "Folder Options" from the Tool (View) menu, and select "Show all files (and folders)."

- \WINDOWS\INF\OTHER\YAMAHA\AUB99.INF
- \WINDOWS\SYSTEM\Xgusb.dr
- \WINDOWS\SYSTEM\Ymidusb.sys

- ④ Disconnect the USB cable.
- ⑤ Restart the computer.
- ⑥ Re-install the driver. (page2)

### Macintosh

- ① Delete the files in the following locations:
  - System Folder | Control Panels | YAMAHA USB MIDI Patch
  - System Folder | Extensions | USB YAMAHA MIDI Driver
  - System Folder | OMS Folder | YAMAHA USB MIDI OMS Driver
- ② Restart the computer.
- ③ Install the driver (page7) and set up OMS (page9).